

PUPPY TALES

May-June 2020



Seize the Day!

June is National Pet Preparedness Month!

Follow the Leader!

From Bev...

Dear Puppy Raisers,

It's starting to look more like spring here in the great state of Michigan! For those of you new to puppy raising, welcome! For those returning, thank you and welcome back! Each of you have taken on a responsibility to do what is right and make a difference in your homes and communities, and for that we thank you.

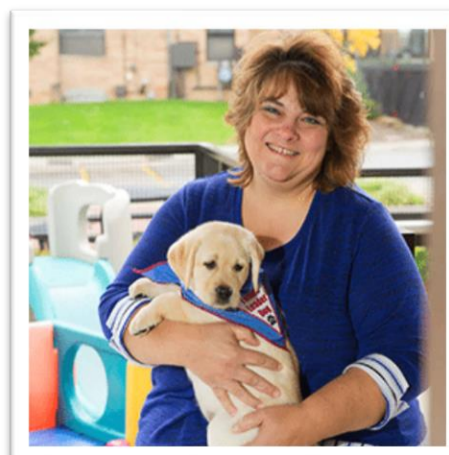
Puppy Development strives to be innovative, and part of that is making online learning accessible to our puppy raisers! The Puppy Development team has developed and implemented online learning sessions on Microsoft Teams! We are excited to share this feature with you! Emails containing invitation links are sent weekly to all puppy raisers. We encourage you join us live or watch the recording at your leisure. Have a question or comment? Drop us a note at PuppyDept@LeaderDog.Org. We love hearing from you, and your feedback is highly valuable to us!

As a dog trainer myself, I have experienced many successes and obstacles with all my dogs. Here are some of my tips to keep in mind during your puppy raising experience:

- Stay positive.
- Understand you've come a long way!
- Be consistent.
- Reach out to your puppy raising community.
- Be kind to yourself.

Sincerely,

Beverly Blanchard
Manager of Canine Development

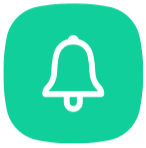


IFT Skills



The monthly skills can be reviewed in the manual found under Training PDFs here:

www.leaderdog.org/puppyraisers.



All **current** puppy raisers, breeding stock hosts, puppy counselors, and prison puppy raisers are eligible to receive a 15% discount at the Leader Dog gift shop and online as well. You must enter code **PUPPY** at checkout to receive the discount. Only one discount code may be applied per purchase. If offer specials online for free shipping, you may choose **either** the 15% or the free shipping option but not both.

Please contact Kimberly Thomas, Gift Shop Coordinator, with any questions at Kimberly.Thomas@LeaderDog.Org

Special Deal!



Haven't had a haircut in a while? We have you covered! Spend \$40 or more in our online gift shop and receive a FREE baseball hat or visor to cover that mop top 😊 No code required but hat or visor choice MUST be added to cart and will be deducted at checkout. Now through Monday May 25!



Gift Shop

The gift shop will be closed until further notice but will continue to process online orders.



Leader Dogs for the Blind Gift Shop
1039 S. Rochester Rd.
Rochester Hills, MI 48307

Call us: 248-218-6347

Email us: Kimberly.Thomas@LeaderDog.Org

<https://leader-dogs-for-the-blind-gift-shop.myshopify.com/>

Shop with us online!



Update from Breeding



by Dana Hunter, Breeding Program Manager

Greetings!

As all of you are aware, the ongoing pandemic has resulted in many changes to our standard operating procedures. You may be wondering if this has impacted our ability to serve clients. What happens when we stop breeding? What happens when puppies remain with their raisers longer? Does this impact the number of dogs we have available for our clients? The diagram above explains the normal process of producing dogs for our clients.

To ensure our dogs are of appropriate age when they return for formal training, they are assigned a “return date” right after they are born. This is the date puppy raisers are given when they pick up their puppies from Leader Dog at 7 weeks of age. These dogs then spend the next year with a puppy raiser. Each training team is comprised of 45 dogs. Once all the dogs have been returned by their raisers, the Guide Dog Mobility Instructors (GDMIs) start formal training. Over the course of 4 months, GDMIs and the dogs work toward possible graduation. The dogs that meet all the requirements to work safely as a guide are selected to go to “class” and are paired with clients. After 3 weeks of class, the dogs officially become “Leader Dogs” and go home with their new best friend!

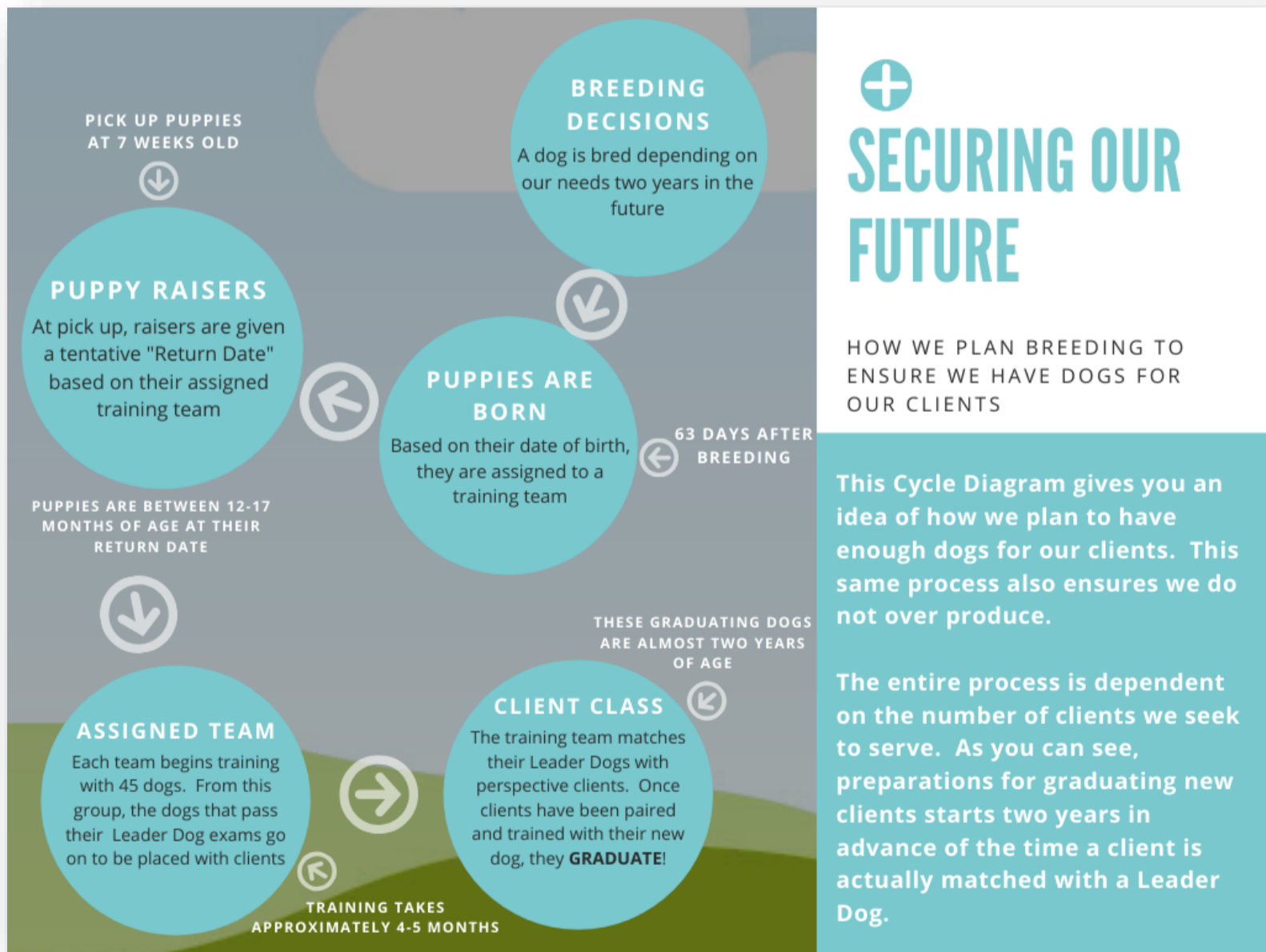
So how did COVID-19 impact our normal operations?

Class dates have been postponed to accommodate and follow state guidelines. These dates have changed along with updated information from the state of Michigan.

Puppy raisers were asked to hold on to their Future Leader Dogs a while longer. If a team’s class date was pushed out 3 months, so were the return dates for the dogs assigned to that team.

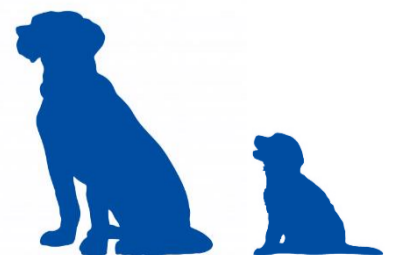
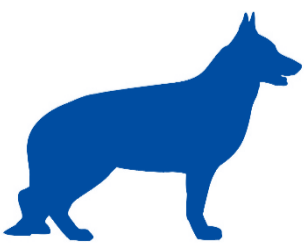
Breeding was put on hold. When a dog is bred, 9 weeks later she has puppies. Those puppies need to be assigned to a team’s return date approximately 12-17 months from that date. Because class has been delayed as well as the return of Future Leader Dogs, there is no need for new puppies. The need for dogs to return to campus 12-17 months from today is currently being met by all the puppies that are already being raised as Future Leader Dogs. They will just be a bit older than the typical age of return.

What’s next? Breeding will resume as soon as it is permitted and necessary. There will not be a shortage of dogs for our future clients as everything has simply been delayed by a few months. If breeding had stopped but classes had continued with puppy raisers still returning their dogs to campus, we would be in a much different situation. Since everything went on hold at the same time, the normal production schedule is still on track, just delayed a bit.



The Circle of Life!

Whelp Date	Dam	Sire	Total Live	Breed
4/1/2020	Meikka	Gatsby	4	Labrador Retriever
4/5/2020	Capri	Dobby	8	Labrador Retriever
4/8/2020	Abby	Kapten	9	Golden Retriever
4/24/2020	Sophia	MacGyver	8	Golden Retriever/Labrador Retriever
4/28/2020	Alexa	MacGyver	7	Labrador Retriever
5/2/2020	Ladybug	Briggs	8	Labrador Retriever
5/4/2020	Emory	Ryder	5	Labrador Retriever
5/11/2020	Everest	Roughy	8	Golden Retriever



The banana. An elongated and curved fruit, with soft flesh, rich in starch, covered with a rind, which may be green, yellow, red, purple, or brown when ripe. It is inexpensive and readily available in most areas. Amongst the amateur home baking community, many people adhere to the philosophy of when your bananas begin to overripen and become brown, you save them to make banana bread. If you are not much of a baker, or don't enjoy eating banana bread, here is another way to use your brown banana's!

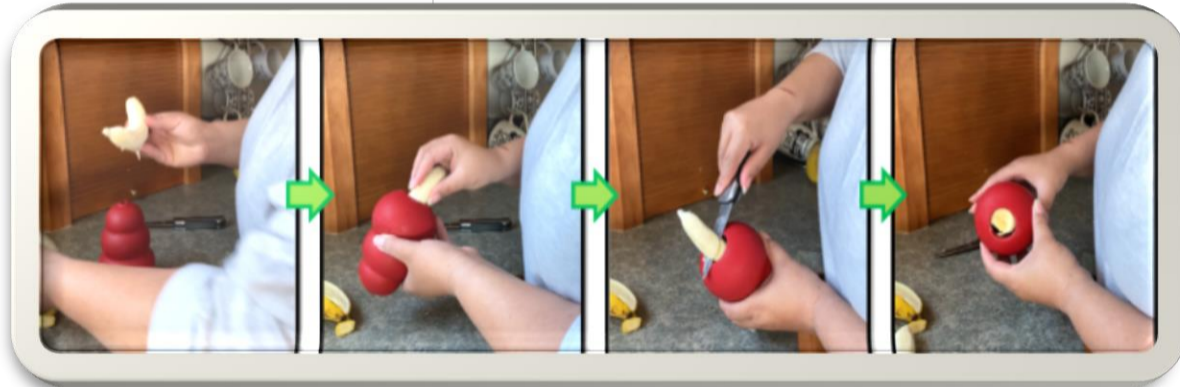
Bananas are amongst the fruits that are safe for dogs to eat. As they ripen, they become very sweet and creamy. Their soft, creamy texture makes them perfect to use in applications where peanut butter or yogurt typically is given to dogs.

Food, in the world of animal training, can have many benefits. It can be used to reinforce a desirable behavior; it can change an emotional state from something that once caused fear to something that now causes joy and it can also reduce immediate anxiety in certain situations. A banana combined with the traditional grenade shaped Kong® can take the care and training you give your dog to the next level!

Start by peeling the banana and inserting it into the Kong. I find in most situations the diameter of the banana matches up perfectly to the opening of the Kong. If the length of the banana extends beyond the length of the Kong, then use a knife to remove any excess. From there the possibilities are endless!



“Food, in the world of animal training, can have many benefits”



A Simple Behavior Tool

Written by Melissa Raymond, Puppy Development Coordinator



Dog Food Update! ProPlan gets new look!

THIS IS THE CORRECT BAG:

27/17 Chicken & Rice. 

Look for the Husky, Chicken and Rice!

THIS IS THE WRONG BAG: 27/17 Turkey & Barley 



Socialization: The Journey of Familiarization



Written by Vijay Joshi, Puppy Development Coordinator

Socialization—It is the process of preparing a dog to enjoy the interactions and be comfortable with other animals, people, places and activities. Ideally socialization should begin during the “sensitive period” which is between 3 and 14 weeks of age for puppies. (Retrieved from the American Veterinary Medical Association).

As I navigate through these changing times, I adjust, adapt, and repeat. Through this process I can only think of how our puppies do this as a way of life every day. Our puppies adapt, adjust, and repeat according to the information they receive from their environments. They do this to the best of their abilities with the information and support they are given. How wonderful it would be for puppies if the environments, objects, people, and other critters were exposed to them in a gentle and thoughtful way. The process of socialization and familiarization, done correctly, is a powerful tool that builds a strong foundation of confidence and a joy of exploration. In this article, I would like to provide information that will help and guide you to make socialization a less stressful experience for you and your puppy.

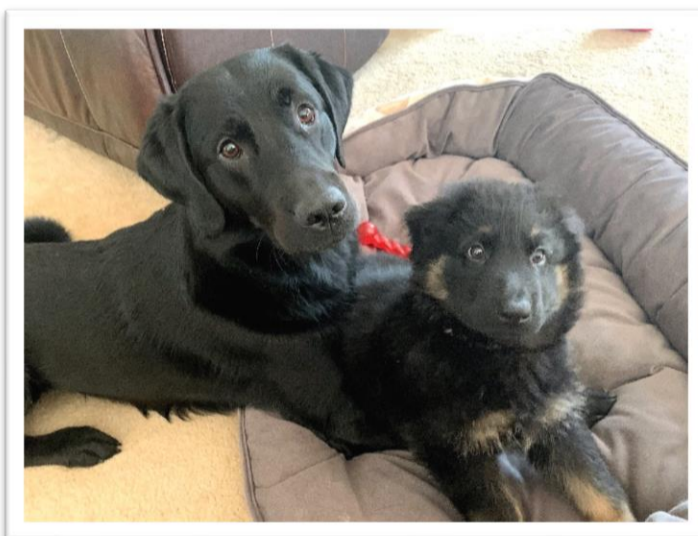
First, let’s talk about a puppy’s body language. The different stress signals our puppy gives can be overlooked, ignored, or even misinterpreted. Each puppy is as unique in his responses to his world as we are. A fire hydrant can be nothing to one puppy and Darth Vader (yes, I have been watching Star Wars) to another. By observing your puppy, you will improve your ability to interpret a dog’s body language and then plan or readjust to help him. Included below is a diagram with different depictions of a dog showing fear, anxiety, or stress. Look over the different parts of the diagram. Then, please, take time to watch your puppy at home and see what you can observe. Then, take your puppy outside and sit with him or just let him explore. What do you observe? How about if you take your puppy for a car ride? Do you have other dogs or pets at home? How is your puppy’s body language when interacting with them? Once you have a few sessions of just observing your puppy, it’s time to move to the next step.

For the next step, create a socialization plan specifically for your puppy to prepare him for life in your household. Plan exposure to animals, individuals, environments, and objects that will be a part of your puppy’s life. For example, some items in your home could be the vacuum cleaner, blender, or bathroom fan. Some objects other could be garden statues, furniture, flags, or shoes. Examples of animals could be indoor house pets, deer, geese, gophers, and neighborhood dogs. Give regular, positive, and diverse experiences to help encourage your puppy to enjoy and explore. Provide play, praise, and treats to reward engagement. Choose what your puppy finds reinforcing not what you may guess is rewarding.

Lastly, remember to be your puppy’s biggest advocate. Follow these steps,

- 1) OBSERVE your puppy & LEARN about your puppy
- 2) CREATE a specific SOCIALIZATION Plan for your puppy
- 3) Be prepared—to reward, adjust, or leave depending how your puppy reacts
- 4) Give Distance or Change Direction to help your puppy when he is scared, stressed, or anxious

Being an advocate for your puppy involves following all these steps and setting him up for success. Remember, the goal is to build a foundation of confidence and a sense of joy for exploring. As a puppy raiser you will be with your puppy during the key developmental periods where correct socialization and familiarization are critical and important. If you have any questions or need more information please do not hesitate to contact your puppy counselor or Puppy Development at puppydept@leaderdog.org. Thank you so very much for all that you do!



Future Leader Dogs, Bowman and Azir

Body Language of Fear in Dogs

More Subtle Signs of Fear & Anxiety

- Slight Cowering
- Major Cowering
- Licking Lips when no food nearby
- Panting when not hot or thirsty
- Brows Furrowed, Ears to Side
- Moving in Slow Motion walking slow on floor
- Acting Sleepy or Yawning when they shouldn't be tired
- Hypervigilant looking in many directions
- Suddenly Won't Eat but was hungry earlier
- Moving Away
- Pacing



Puppy Counselors Needed!

Puppy Counselors are volunteers just like you who give their time, knowledge, and experience back to Leader Dog’s puppy raisers.



Vijay Joshi

We recently had an informational session that we recorded. If you are interested in learning about becoming a Puppy Counselor, please contact Puppy Development for a link to the video.

For additional information, please contact Puppy Development at PuppyDept@LeaderDog.Org

The PRAC

The Puppy Raiser Advisory Committee represents all puppy raiser concerns. We want to hear from you!

PuppyAdvisory@LeaderDog.Org

First Year

Linda Gimble

With Husband Tony are raising FLD #21. Also a Puppy Counselor and IFT assessor from IL.

Lexie Medford

Currently raising FLD #4 (Reef); High School student in Michigan.

Patricia (Trish) Agnew

Currently raising puppy #5, with husband Jeff, and also a Dog Transition Assistant Volunteer on campus.

Second Year

Jeffrey Schafer

Raising FLD #9; independent puppy counselor for the southern area, Lions Past Council Chair/Past District Governor in Indiana; member of Multiple District 25 (MD-25 Indiana) Lions Leader Dog Committee; lives in Indiana.

Sherry Perkowicz

Raising FLD #9, IFT assessor and Lions District 1-F Leader Dog Committee Chairperson. Lives in Illinois.

Third Year

John Berkheiser

PRAC Chairperson

Chairman of the PRAC. With wife, Elaine, raising FLD #31 Have hosted 3 breeding stock moms (all retired). They are also puppy counselors and IFT assessors. Both are Lions and serve as District 12-I Leader Dog Chairs and MD-12 Leader Dog Coordinators; lives in Tennessee.

Michael Mordarski

raising FLD #13. Volunteers on campus as Dog Transition Assistant. Lives in Michigan.

Deb Kaminski

Currently raising raising FLD #6; Lions member and lives in Michigan.

First Time Puppy Raisers

Sherri Dodge

Almost finished with raising puppy #1, past LD employee in dog care and lives in Michigan.

Anne Fuelle

Just started raising puppy #1, Helped start the Oakland University puppy club, loves in Michigan.

Administrative

Connie Beckett

PRAC secretary

Part time LDB Philanthropy team member and on-campus Canine Support Assistant volunteer.

Bev Blanchard

Manager of Canine Development

Has raised 13 puppies, housed 3 dogs for the breeding program and has been a team member overseeing puppy development for 26 years.

Teams Meetings

Join the Puppy Development team for some virtual training sessions! You will receive emailed invites this week containing links to join these sessions. The platform we use is Microsoft Teams. It is free to use, and you do not need to download the app to your mobile device, although you are welcome to if you do not have a webcam with your computer. To join: click the link, enter your name, and a team member will let you into the meeting. You can participate with your device's camera or make use of the chat feature and type your questions for the instructor. We may not be able to answer everything in one session, so please email puppydept@leaderdog.org with additional questions.

See you there!



To view recorded sessions, navigate to this YouTube playlist:

<https://www.youtube.com/playlist?list=PLnVE4gWg22pqWHI13OVAWw9qP-iUvFYb>



PUPPY RAISER YOUTUBE!

Check out our puppy raiser YouTube channel here: [Leader Dog Puppy Raising!](#)

5 COMMON PLACES TICKS HIDE ON DOGS

PROTECTING YOUR DOG FROM TICKS
Check your dogs for ticks daily, particularly during warm seasons. For our friends with extra fur, make sure to press in through their coat and feel for bumps on the skin which could be ticks.

Generally speaking, ticks are looking for the warmest spaces on your dogs body to latch on - so here are the places you DEFINITELY want to keep an eye on:

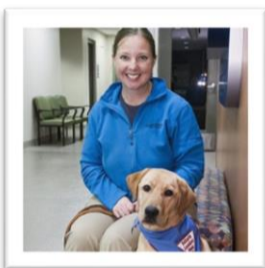
- 1 UNDER THE COLLAR**
Since dogs collars aren't usually removed, it's possible for a tick to make a little home underneath it without anyone noticing. Make sure to remove your dog's collar from time to time and inspect for ticks.
- 2 "PRIVATE" AREAS**
Near your dogs genitals and perianal area tend to stay warm, making them a popular spot for ticks to latch on.
- 3 INSIDE OF EARS**
If you notice your dog scratching at its ears, ticks could be the cause. All the little crevices inside of an ear make it a popular spot for ticks to hang out.
- 4 BETWEEN TOES**
Ticks are excellent at hiding, so spots like between the toes are cozy and not something that's easy to see - making it a perfect place for a tick to setup camp.
- 5 NEAR THE EYELIDS**
Is it a skin tag or is it a tick around your dogs eyes? It can truly be difficult to tell, which is why around the eyes is one place ticks go unnoticed. If you're not sure, it's best to consult with a professional.

SOURCES
<http://www.akc.org/content/health/articles/places-to-look-for-ticks-on-dog/>
<http://www.petmd.com/dog/parasites/finding-ticks-your-dog-5-places-look>
http://www.dogsandticks.com/protect_your_pet/remove_ticks.php

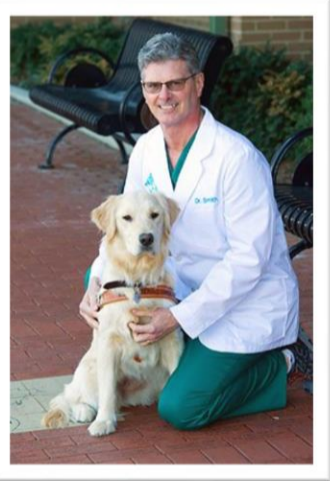
For questions about dog returns, puppy questionnaires, grad photos, updates on dogs in training, RSVP for bi-monthly training, contact **Zach Jirik**.



For questions on puppy placement, pick-up, puppy jackets, training advice, or questions regarding prison puppy raising please contact **Laura Fisher, Melissa Spooner-Raymond or Vijay Joshi**.



For questions about health or medical concerns, contact the **Veterinary Department** at extension 1118 (248-651-9011 or 888-777-5332).



For questions on breeding stock, puppy or dog donations, contact **Dana Hunter**, breeding program manager, at extension 1140 (248-651-9011 or 888-777-5332).

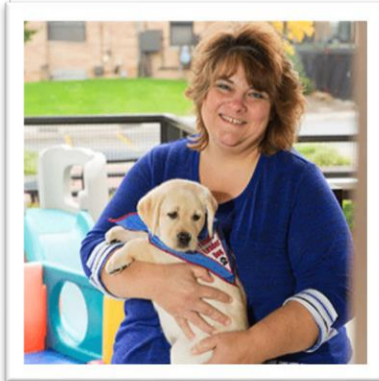


The **Puppy Raiser Advisory Committee** is a volunteer group that addresses puppy raiser concerns.

Puppy Raiser Website & Puppy Raiser Manual

To view the puppy manual, IFT skills & self-assessment for puppies up to 9 months, contact IFT assessors, look for photos of Leader Dog Moms and Dads, look for counselor and puppy raiser events on the calendar, review all the past issues of this newsletter, puppy raiser job descriptions, order puppy raiser contact cards, or look at puppy raiser FAQs for a guide dog instructor, please go to the puppy raiser page of the Leader Dog website at www.leaderdog.org/puppyraisers

The **Canine Development Puppy Raiser/Breeding Host Facebook page** is a closed group available to puppy raisers and breeding host homes. You must have a Facebook page and be actively volunteering as a puppy raiser, puppy counselor, breeding host home or prison puppy liaison. You must click on the invitation on the above chart to be a part of the group. This is a fun social activity that is a great way to connect with puppy raisers and breeding host families.



Who Do I Contact?



Breeding Team

Contact the Breeding team for questions about breeding stock dogs or dog donations.



Veterinary Team

For questions about health or medical concerns, contact the Veterinary Department at (248) 218-6308.



Puppy Development

Contact Vijay Joshi, Melissa Raymond, and Laura Fisher for training assistance, equipment, and puppy placement. Contact Zach Jirik for assistance accessing the puppy raiser application, updates on dogs in training, and scheduling your puppy's return.



For any general questions email Puppy Development at PuppyDept@LeaderDog.Org.



LEADER DOGS

FOR THE BLIND

Name	Title	Phone	Email
Bev Blanchard	Manager of Canine Development	248-650-7113 or 888-777-5332 ext 1113	bblanchard@leaderdog.org
Laura Fisher	Puppy Development Coordinator	248-218-6422 or 888-777-5332 ext 2075	lfisher@LeaderDog.Org
Melissa Spooner-Raymond	Puppy Development Coordinator	248-218-6686 or 888-777-5332 ext 2086	Melissa.Raymond@leaderdog.org
Vijay Joshi	Puppy Development Coordinator	248-218-6091 or 888-777-5332 ext 2513	Vijay.Joshi@LeaderDog.Org
Zach Jirik	Puppy Development Administrative Assistant	248-650-7108 or 888-777-5332 ext 1154	Zachary.Jirik@LeaderDog.Org
After hours / emergency	Please use the 888-777-5332 for any emergency calls	248-651-9011 and listen to menu for extension if local	For true emergencies dial 888-777-5332; press 6 at the prompt; then press 0 at the prompt, if distance
Puppy Raiser Advisory Committee	Represents all puppy raiser concerns		PuppyAdvisory@LeaderDog.Org
Leader Dog Puppy Raiser and Breeding Stock Facebook group	To ask to be invited: https://www.facebook.com/groups/145843429080738/ You must have a Facebook page to participate. To be approved the name of the FB account must match the name on Leader Dog records, or notify us if you use something other than your full name		Closed Facebook group only for puppy raisers and breeding host families. A place for raisers to connect with host homes, siblings, and other puppy raisers, as well posts from Leader Dog puppy development and breeding.
Puppy Raiser Page on Website	www.leaderdog.org/puppyraisers		Puppy raiser calendar; IFT assessor list and information; puppy manual; past issues of newsletter; thank you certificate

